



CLEAN PRAIRIE FRIDAYS

What goes in the bin?

How to be a better recycler





LET'S TALK ABOUT:

- GPTX Recycling Program
- Why we recycle
- What the recycling symbol means
- What goes in the bin
- What happens after your recycling is collected
- FAQs

GRAND PRAIRIE

CURBSIDE RECYCLING PROGRAM



The City of Grand Prairie implemented curbside recycling in 2000. Over the years, the program has steadily grown.

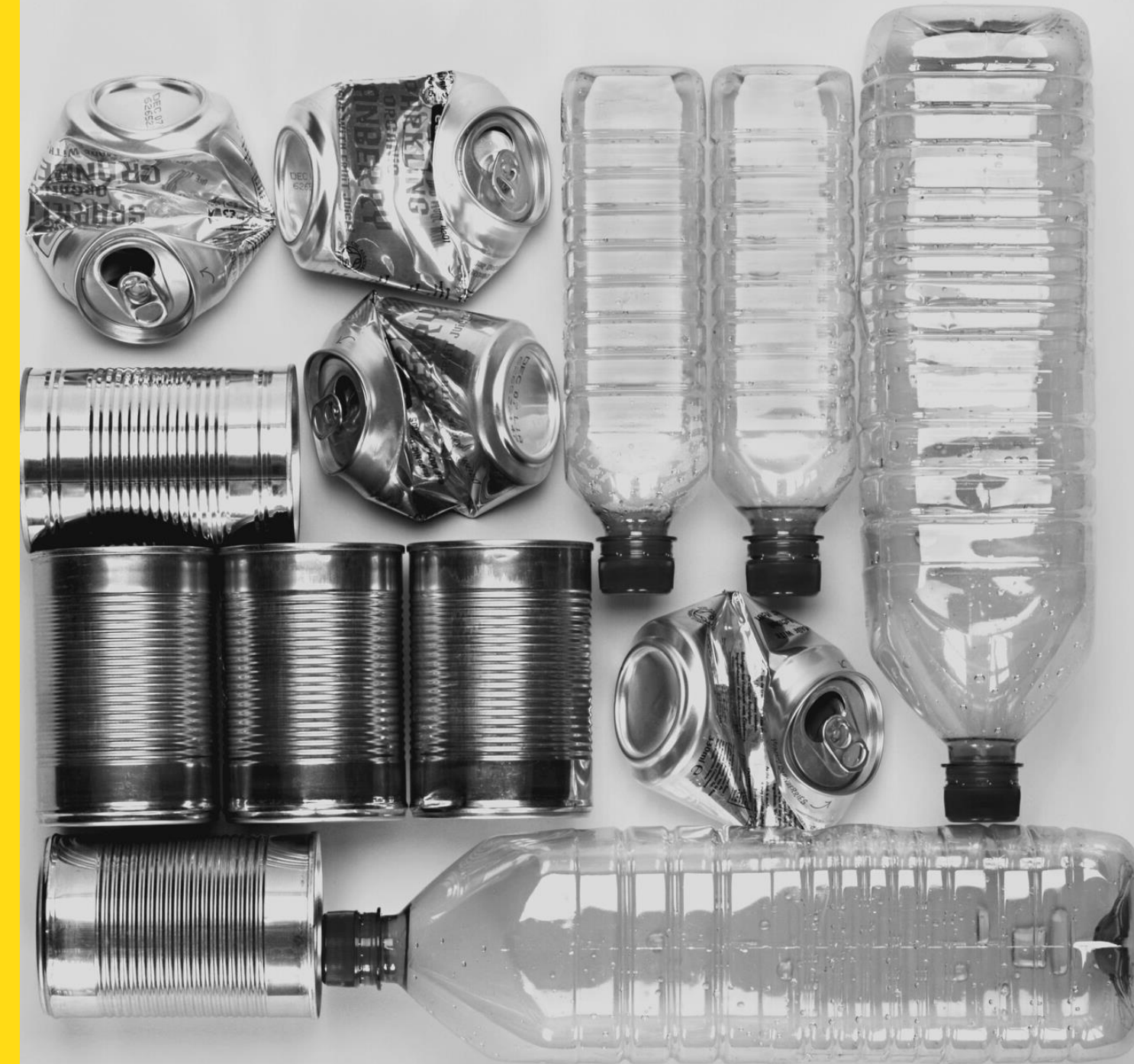
Approximately 25% of the households in Grand Prairie participate in our recycling program.

Grand Prairie residents recycle approximately 390 tons of material at the curb every month...that's 780,000 pounds.

WHAT IS RECYCLING?

Collecting and processing materials that would otherwise be thrown away as trash and turning them into new products.

Recycling reduces the need for extracting (mining, quarrying and logging), refining and processing raw materials





WORDS OF INSPIRATION

There is no such thing as 'away.'
When we throw anything away it
must go somewhere

ANNIE LEONARD

Why do we recycle?

CONSERVES RESOURCES

When we recycle, materials are converted into new products, reducing the need to consume natural resources which will help to protect natural habitats for the future.

SAVES ENERGY

Using recycled materials in the manufacturing process uses considerably less energy than that required for producing new products from raw materials.

PROTECTS THE ENVIRONMENT

Recycling reduces the need for extracting, refining and processing raw materials all of which create air and water pollution. As recycling saves energy it also reduces greenhouse gas emissions, which helps to tackle climate change.

SAVES LANDFILL SPACE

Recycling keeps materials out of the landfill that could otherwise be converted into new products. Saving landfill space also prolongs its lifespan which benefits the community.



WHAT DOES THE RECYCLING SYMBOL MEAN, ANYWAY?

IT'S RECYCLABLE RIGHT??

Not exactly...the recycling symbol
doesn't mean an item is always
recyclable.



This is a problem because usually, when people see one of these recycling symbols, they automatically think, “I can recycle this!” and toss the item into the recycling. But the chasing arrows don’t always mean something is recyclable, and recycling the wrong items causes contamination in our recycling stream.

Contamination reduces how much of our materials actually get recycled, and it makes recycling more expensive.

DON'T BE A WISHCYCLER

- Have you ever gone to throw something away and you agonize for a nanosecond about whether it's recyclable? You decided to put your item in the recycling bin and think "If I make a mistake...someone will sort it out for me."
- This is one of the main causes of contamination in the recycling bin and it causes a lot of problems.
- You have good intentions, but you need to do a little more work to be a better recycler.

DECODING THE SYMBOLS

Plastic Resin Codes



Recyclable or
Recycling only



Made from
recyclable
material



PET, PETE **(Polyethylene Terephthalate)**

- Soft drink, water and salad dressing bottles; peanut butter and jam jars...
- Suitable to store cold or warm drinks. Bad idea for hot drinks.



HDPE **(High-density Polyethylene)**

- Water pipes, milk, juice and water bottles; grocery bags, some shampoo / toiletry bottles...



PVC **(Polyvinyl Chloride)**

- Not used for food packaging.
- Pipes, cables, furniture, clothes, toys...



LDPE **(Low-density Polyethylene)**

- Frozen food bags; squeezable bottles, e.g. honey, mustard; cling films; flexible container lids...



PP **(Polypropylene)**

- Reusable microwaveable ware; kitchenware; yogurt containers; microwaveable disposable take-away containers; disposable cups; plates....



PS **(Polystyrene)**

- Egg cartons; packing peanuts; disposable cups, plates, trays and cutlery; disposable take-away containers;....
Avoid for food storage!



Other **(often polycarbonate or ABS)**

- Beverage bottles; baby milk bottles; compact discs; "unbreakable" glazing; lenses including sunglasses, prescription glasses, automotive headlamps, riot shields, instrument panels...

FOCUS ON THESE PLASTICS



PET, PETE **(Polyethylene Terephthalate)**

- Soft drink, water and salad dressing bottles; peanut butter and jam jars...
- Suitable to store cold or warm drinks. Bad idea for hot drinks.



PP **(Polypropylene)**

- Reusable microwaveable ware; kitchenware; yogurt containers; microwaveable disposable take-away containers; disposable cups; plates....



HDPE **(High-density Polyethylene)**

- Water pipes, milk, juice and water bottles; grocery bags, some shampoo / toiletry bottles...

WHAT GOES IN THE BIN?

THESE ARE THE ITEMS YOU CAN
RECYCLE IN YOUR CURBSIDE BIN

PAPER

*CARDBOARD/
PAPERBOARD*

*GLASS BOTTLES
& JARS*

*PLASTIC BOTTLES
& CONTAINERS
(1,2,5)*

ALUMINUM CANS

*MILK & JUICE
CARTONS*

*STEEL & TIN
CANS*



Mail, Paper

Window envelopes and glossy papers are fine.



Newspapers, Magazines

No need to worry about glossy pages or sticker ads.



Cardboard Boxes

Flattened, box tape still on them is fine.



Plastic Bottles

Water and soda bottles are extremely valuable in the recycling stream. Always recycle these!



Aluminum Cans



Food Cans



Juice/Milk Cartons



Paperboard Boxes



Glass Bottles/Jars

Prep your items for the bin!



EMPTY

Make sure all containers, jars, and cans are empty.

full containers=contamination



CLEAN

Rinse out your containers.
They don't have to be spotless!

Keep the lid on!



DRY

Items should be dry to protect paper and cardboard from becoming wet

PUT THESE IN THE TRASH!



Hazardous Materials

Paint, pesticides, fertilizer, or their containers. Take these to household hazardous waste collection facilities or events.



Propane Tanks

Very dangerous for many reasons. Take these back to a vendor.



Drinking Glasses

While glass as a category is recyclable, drinking glasses and window glass panes are typically not accepted and belong in the trash.



Wire Hangers

Wire and plastic hangers both belong in the trash.



Wrapping Paper/Gift Bags

Wrapping paper is typically coated with foil, glitter, or other items. Put wrapping paper in the trash. For a more sustainable wrapping paper option, use craft paper or newspaper instead.



Ceramics

Dishes, plates, bowls, and other ceramic items may have an extended life if taken to a reuse store, otherwise they belong in the trash.



Tissues

The tissues themselves should go in the trash (even clean ones). Used tissues always go in the trash, that's just gross. Once your box is empty, you can recycle the paperboard box.



Garden Hose

A common tangler that breaks recycling equipment.



Chains

A common tangler that breaks recycling equipment.



Metal/Wood

Construction materials do not belong in the recycling stream.

WHAT DOES A GOOD BIN LOOK LIKE?



ITEMS ARE LOOSE

Do not bag recyclables!!

BOXES ARE

FLATTENED

Place under bin if too large
or on windy days

NO TANGLERS

No cords, hoses, hangers



YOU'VE RECYCLED, NOW WHAT?

GOOD JOB!

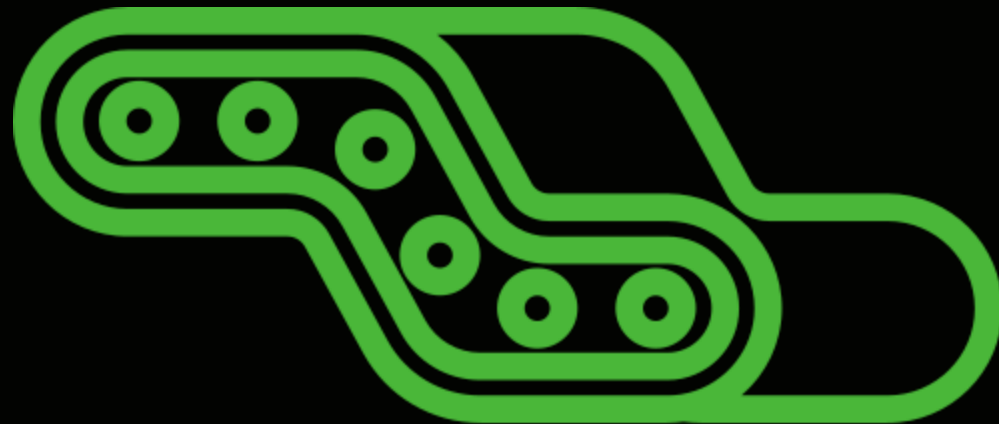
Thank you for doing your part!

FROM CURB TO MRF

Your recycling is hauled to a materials recovery facility...or MRF

ITEMS ARE SORTED AND BALED

Items are both mechanically and manually sorted, then baled, and finally sold to buyers who will turn the material into something new.





Something to think about



- Dictated by market demand, price determinations, local regulations
- Consumers play critical role- depending on how we use our products and in what shape we throw them away, determines their value and quality post-use.
- Recycled goods have to compete with new products in the market; who wants to buy something of lower quality?

PLASTIC BAGS...WHAT'S THE PROBLEM??



- When plastic bags/film are left in the bin, they tangle in the sorting equipment at the MRF.
- This causes shutdowns, which wastes time
 - Plastic bags must be manually cut and removed from the machine...slowing down the sorting process

PLASTIC BAGS...WHAT'S THE SOLUTION??



- Don't bag your recycling
- Don't put plastic grocery bags or other plastic film in the bin
 - Return to grocery stores

FAQs

These are common questions we receive on a regular basis

- Where can I get a bin?
 - Landfill, Prairie Paws
- I live in a multi-family complex—where can I take my recycling?
- Are bins delivered?
- My recycling was missed, what do I do?
- Can I recycle _____?
- (When) will we get carts?

Starting January 1 2021, blue recycling bags will no longer be accepted for overflow recycling. Please obtain a bin if you don't have one, or an extra if you're an avid recycler!

CHANGES

NEXT EXIT



BAG THE BAG! GRAB THE BIN!

DON'T BAG RECYCLABLES! HERE'S WHY.

Blue recycling bags have been popular for years but hinder the recycling process by causing tangles and wrapping around equipment at the recycling sorting facility. Plastic bags can damage the machines and cause the sorting process to shut down.

Takes these steps to be a better recycler.



1 DON'T BAG YOUR RECYCLING!

Effective January 1, 2021, we will no longer collect recycling in blue bags (or other plastic bags). Recycling should be placed loose in your green recycling bin.



2 GRAB A BIN!

One 18-gallon green bin per household is supplied by the City. Additional bins can be purchased for \$5 each at the City's landfill or Prairie Paws Adoption Center.



3 REUSE YOUR BLUE BAGS!

Blue recycling bags can be used to line your indoor trash bins or as doggy doo bags. Please place in regular trash bags before putting on the curb.



4 RECYCLE BETTER!

The following items can go in your green recycle bin:

- Plastic bottles and containers, leave the lids on
- Glass bottles and jars, any color or shape
- Paper, newspaper, magazines, phones books, junk mail
- Cardboard-please flatten
- Aluminum, steel, and tin cans
- Cartons (juice, milk)

Make sure all containers are clean, empty, and dry!

QUESTIONS?

EMAIL: RECYCLING@GPTX.ORG

CALL: 972-237-8061

Grand Prairie
TEXAS
SOLID WASTE AND RECYCLING

WWW.GPTX.ORG/RECYCLING

CONTACT US

QUESTIONS, COMMENTS,
SUGGESTIONS

"When in doubt, talk
it out."

EMAIL ADDRESS

recycling@gptx.org

PHONE NUMBER

972-237-8061

