



Winter 2017
Volume 11, Issue 1

Congratulations 2016 Grand Prairie Clean Shop Awardees!

Each January, City Code and Environmental Quality Staff select three shops that achieved the highest level of excellence from the previous year. It is a tough decision, as there are many great nominees. Congratulations to the following 2016 winners!

Select Cars and Trucks, located at 1415 E Main Street, is a top pick for the Clean Shop award. In 2016, they installed a screening fence to improve the view from Main Street. The vehicle staging area has a parking lane for each vehicle, there is no double stacking of vehicles, and there are drive aisles. In addition, no inoperable vehicles have been observed on the lot. The building and offices are also very well maintained.



The highly visible **A&B Muffler Shop**, located at 904 E. Main, maintains a welcoming appearance from the street. The inside of the shop is organized, free of clutter and spills, while the outside area is well-maintained with no clutter or debris.



Following their 2015 City inspection, a number of housekeeping improvements were made, pushing **Kwik Kar Lube**, located at 3450 S. Carrier, into one of the top spots for the Clean Shop award. Kwik Kar Lube now consistently maintains a clean shop and parking lot. In addition, manifests are always readily available and complete.



Inside this issue:

2016 Top 10 ARB Violations	2
Parking and Loading Vehicles	2
Texas Trouble	3
Sanding Discharges	3
The Dangers of Body Filler (Bondo)	3
The Importance of Cleaning Up Oil/Fuel Spills	4

We're online!!!
www.gptx.org/ARB



Creating raving fans by delivering world class service.

2016 Top 10 Violations at Grand Prairie Auto Businesses

1. **Discharge from sanding activities.** All bondo dust and other sanding dusts must not be allowed to discharge from your facility. All dust must be cleaned up and disposed of properly.
2. **Accumulation of trash and debris.** All trash should be picked up on a daily basis in order to keep your outside area clean. Even trash/debris that did not originate from your facility must be picked up.
3. **Improper discharge of vehicle fluids to the ground.** All spills to the ground must be cleaned up immediately and disposed of properly. A drip pan should be placed under all leaking vehicles outside. If fluids are discharged to the soil, all affected soil must be removed and disposed of properly.
4. **Washing vehicles without a wash bay and approved sand/grit trap.** Vehicle washing is allowed in a wash bay with an approved sand/grit trap only.
5. **Storage of tires without rims outside.** Tires without rims stored outside can collect stormwater which provides a potential breeding ground for disease carrying mosquitos. Keep all tires without rims under cover.
6. **Certificate of Occupancy Violations.** The operator who obtains a Certificate of Occupancy (CO) must follow the regulations stated on the CO at all times. Activities not approved on the CO are not permitted.
7. **Violation of off street parking regulations.** No parking space may be located in the right-of-way of any street, roadway, or public alley. Parking spaces must be provided for employees. No parking or storage of vehicles is allowed in the fire lane.
8. **More than 2 inoperable vehicles stored outside.** The city ordinance allows no more than 2 inoperable vehicles to be stored outside of an enclosed building at any one time.
9. **Outside repair of vehicles is prohibited.** Repair of vehicles outside is not allowed. Working under an awning is considered outside repair.
10. **Work without approval of the Building Official is prohibited.** A permit must be obtained for the installation of signs and any modifications you want to make to buildings.



Parking and Loading Vehicles



To promote and protect the health, safety, comfort, convenience, and general welfare of the public, the city's Code Department follows the Unified Development Code (UDC) guidelines, in addition to the Auto-Related Business (ARB) ordinance. In 2016, vehicle parking and loading violations were frequently identified during inspections of ARBs. The most common violations included fire lane, drive aisle, right-of-way and roadway obstructions, improper parking, storage, and loading/unloading of vehicles, insufficient storage space and visitor parking spots, and performing repair work outside of the designated work areas.

These violations create nuisances that obstruct the free flow of traffic, deny safe access to businesses, and create blind spot hazards. In addition, City services, such as fire and police emergency response, municipal waste collection, and street maintenance are interrupted, delayed, or denied due to the lack of safe and proper access to the area.

Corrective actions include 1) avoiding use of prohibited or restricted areas for parking, storage, loading/unloading purposes, or repair work, 2) providing ample parking (minimum of six passenger vehicles spots) and 3) allocating separate storage spaces for drop-offs, repaired or inoperable cars, and vehicles for sale. Maintaining a parking and storage plan that fits the fluctuating car volume of an ARB is essential not only for aesthetic reasons, but primarily for the health and safety of the all citizens in the community.

Texas Trouble

An auto salvage yard in Comal County was fined \$3,750 for allowing the unauthorized discharge and spill of waste into the environment.

A used tire shop and scrap tire transporter facility in Llano County was fined \$24,833 for failing to notify the agency of any change regarding the used tire transporter and generator registrations within 15 days of the

occurrence of the change and by allowing the unauthorized disposal of municipal solid waste.

An unauthorized used oil collection and storage facility in Cameron County was fined \$10,500 for failing to prevent the storage of used oil in a manner that endangers the public health or environment, by failing to perform response action upon detection of a

release of used oil, and for failing to mark or clearly label used oil storage containers with the words Used Oil.

A tire shop in Travis County was fined \$1,250 for failing to retain and make available original manifests, invoices, or other documentation used to support activities related to the removal and management of all scrap tires generated on-site.

Sanding Discharges

The dust created from sanding activities is hazardous. It can contain sediment from sandpaper, dust from hardened body filler resin and toxic metals from adhesives, strippers, or solvents. That is why sanding discharge is characterized as a hazardous waste. When water is used in wet sanding, it becomes contaminated too. It is a violation to discharge this water to a storm drain or sanitary sewer line without an approved sand/grit trap.

Here are a few good practices to help manage the hazardous waste created from sanding.



Best Management Practices	
Always conduct sanding activities indoors in a well ventilated, contained area.	Never sand outside or in an area with a floor drain (unless the drain has an approved sand/grit trap connected to a sanitary sewer line) where contaminants have an escape route.
Always use dent repair tools whenever possible.	Dent repair tools eliminate the need for sanding altogether.
Eliminate the use of a wash bucket by using a spray bottle and catch basin.	Spray bottles reduce the amount of water that is used and catch basins will collect and contain any drips from wet sanding.
Use dry clean up methods, such as sweeping or vacuuming whenever possible.	Dry clean up methods help keep contaminants more manageable and the shop floor clean.

The Dangers of Body Filler (Bondo)

Body filler is an everyday product for a body shop, but do you know how hazardous it is? Body filler is a polyester resin that is mixed with a hardener and used for auto body repair. Both the resin and hardener present danger. The hardener contains methyl ethyl ketone which is highly flammable and the resin contains a carcinogen called styrene that can affect your liver and sensory functions after long-term or short-term exposure.



The dust created from sanding hardened body filler is not only a lung irritant, but also flammable and toxic. It must be swept up immediately, stored in an approved and labeled container and hauled off by a registered waste hauler. Caution should be taken by anyone who works with or around body filler and an MSDS should always be on hand for employees. Never use body filler near an open flame or heat source and always work in a well ventilated area or use a respirator fitted with organic vapor cartridges.

City of Grand Prairie

This newsletter is a publication of the Environmental Quality & Code Enforcement Divisions. Submit comments/suggestions to:

Editor: Echo Rexroad
Phone: (972) 237-8082
Fax: (972) 237-8228
Email: erexroad@gptx.org

CITY OF GRAND PRAIRIE
Auto Related Business Program
206 W. Church Street, 2nd Floor
PO Box 534045
Grand Prairie, TX 75053-4045

PRESORTED STANDARD
US POSTAGE
PAID
GRAND PRAIRIE, TX
PERMIT NO. 34

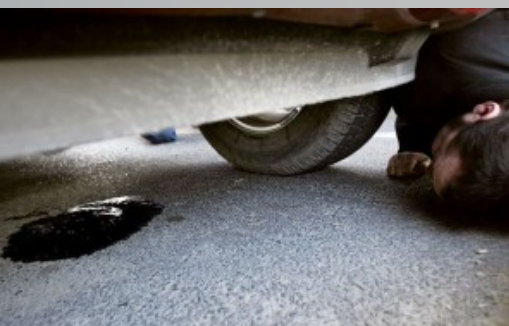
No more than 30 seconds of idling on winter days is needed to warm up your car.



The Importance of Cleaning Up Oil/Fuel Spills

Small oil and fuel spills occurring at auto-related businesses are not uncommon. These occur from leaky vehicles needing work, oil changes, transferring oil or fuel into a disposal container,

Oil/fuel spills are a threat to human health and the environment. One of the biggest issues with spills is the pollution of our stormwater, which eventually becomes our drinking water. When it rains, the rainwater washes oil/fuel spills that are outside into the storm drains which discharge to local streams untreated. The streams eventually run to our rivers and



etc. However, the issue is found in the fact that many of these spills are left on the ground for long periods of time, are partially cleaned up, or never cleaned up at all. The question some may ask is, "What's the harm if a few spills get overlooked?"

lakes, where we get our drinking water, where wildlife reside, and where we swim and play. Spills on the land's surface can also move through the soil and end up in the groundwater, another source of drinking water.

A spill of one gallon of oil can contaminate one million gallons of water. A single pint of oil released into a lake or wetland can cover one acre of surface water and seriously damage aquatic habitat. At low levels of contamination, fuel contaminants in water cannot be detected by smell or taste, yet the seemingly pure water may be contaminated to the point of affecting human health.

It is important that we all work together to observe spills and take action to clean them up in order to protect human health and the environment. For more information, please visit the City's auto-related business website at www.gptx.org/ARB.

Auto Antics



Useful Contacts

Building Inspections
(972) 237-8230

Code Enforcement
(972) 237-8296

Environmental Quality
(972) 237-8055