

We're online!  
[www.gptx.org/ARB](http://www.gptx.org/ARB)

Creating raving fans by delivering world class service.



## AUTO RELATED BUSINESS MEETING ANNOUNCEMENT

Due to the rising number of COVID-19 cases in DFW, an on-site meeting is not possible at this time. However, businesses which still need help to complete a permit application, may contact Chandani Rana at 972-237-8082 for scheduling one-on-one help session.

### Inside this Issue

- 02 Mobile Vehicle Wash Policy  
Managing Outdoor Areas To  
Reduce Stormwater Pollution
- 03 Work Orders for Repair and  
Body Shops  
Proper Management of Used Oil
- 04 Texas Trouble



LEARN MORE WAYS TO BECOME A GRAND PRAIRIE

CERTIFIED PARTNER AT

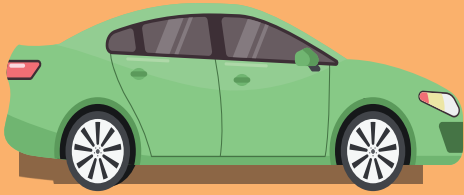
[WWW.GPTX.ORG/CLEAN PRAIRIE](http://WWW.GPTX.ORG/CLEAN PRAIRIE)

## SAFETY PRECAUTIONS FOR BUSINESS OPERATING DURING COVID-19

All workers who are on the job during this COVID-19 pandemic must be protected from disease transmission. All businesses must adopt necessary precautions to minimize the risk of transmission and to help mitigate the spread of COVID-19. Here are few precautions businesses can follow to keep their employees and customers safe:

 <p>Clean and disinfect any regularly touched surfaces such as doorknobs, tables, chairs, and restrooms.</p>	 <p>Keep social distancing between employees and customers (6 feet) during in-person interactions.</p>	 <p>Sanitize every vehicle with disinfectant prior to pick-up or delivery.</p>	 <p>Place readily visible signage to remind everyone of best hygiene practices.</p>	 <p>Wear face masks. Sick employees should stay at home.</p>
--	---	---	---	---

# MOBILE VEHICLE WASH POLICY



The dirt and grime washed off from vehicles including cleaning materials themselves may be harmful to the environment. The City of Grand Prairie, Environmental Quality Division has established the following policies for mobile wash vendors to ensure that the dirt and chemicals used in the cleaning process are not released into the environment.

1. The only approved method requires a portable catch basin (or overlapping basins) and an active recovery system which operates continually during the vehicle wash process.
2. All generated wastewater must be discharged to the sanitary sewer through an approved sand/grit trap.
3. Mobile vehicle wash vendors may wash cars and trucks with plain tap water and allow this water to discharge to the storm sewer systems at automotive sales facilities only.
4. **Mobile truck wash vendors who use a water recycling unit will not be required to discharge their wastewater to the sanitary sewer through an approved sand/grit trap. However, the following is required:**
  - a. All wastewater must be filtered at least one cycle before discharging to the sanitary sewer system.
  - b. All sludge generated by your filtering system must be manifested and hauled away or disposed of by a licensed liquid waste hauler/disposal company.
  - c. Companies utilizing a recycling system must provide analytical data to the City of Grand Prairie Environmental Quality Division (oil and grease, metals, and volatile organic compounds - EPA 624) for intake and discharge water from the unit.
5. Discharge to the sanitary sewer through a sand/grit trap must be done at an approved discharge facility. Discharge to a commercial car wash may be allowed only if an agreement allowing disposal exists between the mobile wash operator and the commercial car wash operator.

For more information, please visit [www.gptx.org/arb](http://www.gptx.org/arb).

# MANAGING OUTDOOR AREAS TO REDUCE STORMWATER POLLUTION

Even though you may not think that you are close to a river or stream, the activities that occur at your shop can directly lead to water pollution. When it rains, storm water runs off from your property carrying the pollutants from outdoor areas into storm drains, and eventually ends up in rivers or streams. Below are few ways to manage outdoor areas that can help prevent water pollution:

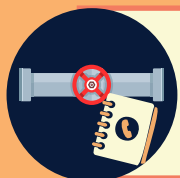


To prevent from spilling oils, coolants or other harmful substances to outdoor areas, only work on vehicles indoors.



Store parts indoor. This helps prevent oil and grease from being washed away in the rain.

Store all liquids, including waste, indoor and in a container with a lid. All containers must be labeled with the contents.



Educate your employees about which drains connect to the storm water system and how to quickly and properly respond to a spill.

Assign an employee to sweep the outdoor areas to ensure storm drains are free of debris as part of their daily tasks.



Taking some time every day to make sure your shop is clean both inside and outside helps to reduce pollution and keeps your shop look appealing.



## Useful Contacts

- Building Inspections  
(972) 237-8230
- Code Compliance  
(972) 237-8296
- Environmental Quality  
(972) 237-8055

## How to Improve Indoor Air Quality

- Change air filters
- Use air purifiers
- Keep it clean
- Let the fresh air in, by opening windows or doors



## TEXAS TROUBLE

A scrap and waste recycling facility Hidalgo County was fined \$12,262 for failing to perform cleanup of a release of used oil, failing to mark four five-gallon containers with the words "Used Oil," improper disposal of municipal solid waste, and failing to obtain storm water authorization.



A common carrier in Tarrant County was fined \$6,255 for depositing a regulated substance into a regulated underground storage tank system that was not covered by their current TCEQ delivery certificate.

A scrap tire recycler in Tarrant County was fined \$11,812 for failing to ensure that scrap tires are transported by a registered transporter to an authorized facility, failing to use manifests or other records documenting the removal and management of all scrap tires, and failing to retain invoices used to support the accumulation, handling, and shipment of used or scrap tires.

This newsletter is a publication of:

Environmental Quality and Code Compliance  
Environmental Services Department  
300 West Main St., 2nd Floor  
Grand Prairie, TX 75050

Submit your comments and suggestions to:

Editor: Cindy Mendez  
Phone: (972) 237-8055  
Fax: (972) 237-8228  
Email: [Cmendez@GPTX.org](mailto:Cmendez@GPTX.org)